



“Your new home  
for English”



MAKE OUR HOMES YOUR SCHOOL



“You can practise  
your English  
everyday in real-life  
situations with your  
teacher and your  
teacher’s family.”

## Contents

Welcome	04	English for Exams	17
Your Stay	06	Young Learners	18
Your Week	09	Summer 2:1	19
Excursions	10	Academic English	20
Travel	11	English for Teachers	21
Locations	12	English for Parent and Child	22
General English	14	English Plus	23
Business and Professional English	15	What’s Included	24
Crash Course	16	Terms & Conditions	26





# Welcome

## *Total Immersion in the English Language*

Learn English successfully, intensively and rapidly by living and studying with your teacher.

You will be welcomed into your teacher's home where you will experience life in the UK as part of a warm, friendly family. You will speak only English every day and your teacher will help you find the right words in daily conversation. Your course is specifically designed to meet your individual needs for learning English.

- high-quality, intensive courses
- 1:1 and 2:1 tuition
- excellent recommendations from past students
- total immersion in English
- professional teachers
- all levels from beginner to advanced
- maximise your progress
- special emphasis on listening, speaking and communication skills
- a specialised programme of study designed for each student
- flexible dates – start on any Sunday
- a full 60-minute teaching hour
- a safe, secure learning environment for children
- short courses to prepare for exams or business meetings
- activities and excursions arranged according to your interests
- visits to famous and interesting places
- a choice of city, seaside or countryside locations
- progress report, certificate and advice for future study
- easy registration and efficient administration

## *A Wide Range of Courses*

- **General English:** this course is aimed at developing all your English language skills according to your needs and requirements.
- **Business and Professional English:** this course is aimed at the English you need for your work. It focuses specifically on communication skills and the language you need in your professional life.
- **Crash Course (four days):** designed for busy professionals who need to learn the maximum amount of English in the shortest possible time.
- **English for Examinations:** intensive preparation for the Cambridge English exams, TOEFL, TOEIC or English examinations in your country.
- **IELTS Exam Preparation:** prepare for the IELTS test with an experienced tutor and take the test at a local IELTS test centre.
- **Young Learner Courses:** fully supervised courses of General English plus a programme of activities for under 18s.
- **Academic English:** prepare for study at school or university in the UK or revise for GCSE and A-level examinations.
- **English for Teachers:** an advanced English course to brush up on your communication skills, vocabulary and use of English for the classroom.
- **English Plus:** a great way to combine studying with a holiday! General English lessons plus activity sessions with your teacher. Courses include: guided sightseeing (historic houses, cathedrals, castles and Roman Britain); walking; cookery; art and design; flower arranging; gardening and visiting formal gardens; literature, poetry, theatre and creative writing.





### *Social and Cultural Activities*

We will arrange visits and excursions to places of interest and you will have free time to spend as you choose. You will be able to practise your English every day in real-life situations with your teacher and your teacher's family and friends. This is the natural way to learn English and to gain confidence in using the language.

“The best way  
to improve your  
English is talking  
– and we talked  
a lot!”



## Your Stay

“Study with a teacher in over 500 amazing locations.”



### *A Wide Variety of Locations*

You can choose to study with a teacher in the city, in the countryside or by the sea.

We can offer courses in major cities such as Bristol, Manchester, London and Liverpool; in fashionable coastal towns such as Brighton and Bournemouth or peaceful countryside villages set in national parks or by the coast.

Please state your preferred location on the booking form or let us advise you of the most suitable teacher and location according to your preferences.



“Our stay was perfect because we had a lot of activities and our teacher was amazing. We can now speak real English!”





*“A very productive immersion. The family was great, we had lots of fun, I worked hard and made good progress in a very pleasant atmosphere. I just want to come back next year!”*

### Lessons

The lessons will consist of a range of all skills (reading, writing, listening, speaking, vocabulary, grammar and pronunciation) and culture according to your language learning needs.

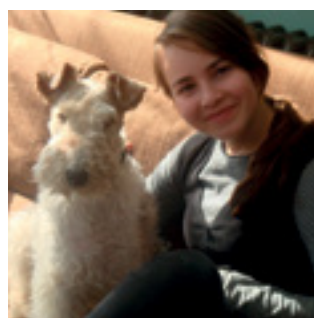



Usually the tuition is in the morning, leaving the afternoons and evenings free for activities, visits and excursions or private study. At the beginning of the course, the teacher will assess your level of English and requirements, and plan a programme of study. You will be assessed again at the end of the course to record progress. A full report of lesson content, achievement, and recommendations for future study will be sent to you after the end of the course, as well as your certificate. The great advantage of this programme is that you live in the home of your teacher, so that learning doesn't stop at the end of the lesson. In every conversation your teacher is helping you to speak English – finding the right words and correcting grammar and pronunciation.

### Family Time

Time spent with your family during meals and evenings is a good opportunity for you to practise your spoken English and to use the language you have studied in the lessons.

You can learn as much during these times as you do in your lessons! Living with your teacher also gives you a unique opportunity to experience and learn about UK culture and way of life.



A photograph of three young women sitting in the back of a yellow open-top vehicle, possibly a tour bus. They are all smiling and wearing sunglasses. The woman on the left has dark hair and is wearing dark sunglasses. The woman in the middle has long brown hair and is wearing bright teal sunglasses. The woman on the right has long blonde hair and is wearing dark sunglasses. They are all wearing casual summer clothing. The background shows a clear blue sky and some buildings, suggesting an urban or suburban setting. The overall mood is happy and sunny.

*“You can choose  
from a huge range  
of local excursions  
and activities.”*



# Your Week

## Example of a one-week, 15-hour General English course for adults

	Morning	Afternoon	Evening
Sunday		Arrival between 3pm and 9pm Getting to know your teacher and family	Evening walk in the local area
Monday	Lessons (3 hours)	Orientation with your teacher	Private study, free time or conversation
Tuesday	Lessons (3 hours)	Free for study, shopping or sightseeing	Visit a traditional British pub
Wednesday	Lessons (3 hours)	Afternoon excursion with your teacher	Private study, free time or conversation
Thursday	Lessons (3 hours)	Free for study, shopping or sightseeing	Film night at home
Friday	Lessons (3 hours)	Afternoon excursion with your teacher	Relaxing with the family and conversation
Saturday	Departure between 9am and 12pm (one-week courses) or full day excursion to local place of interest (two weeks +)		

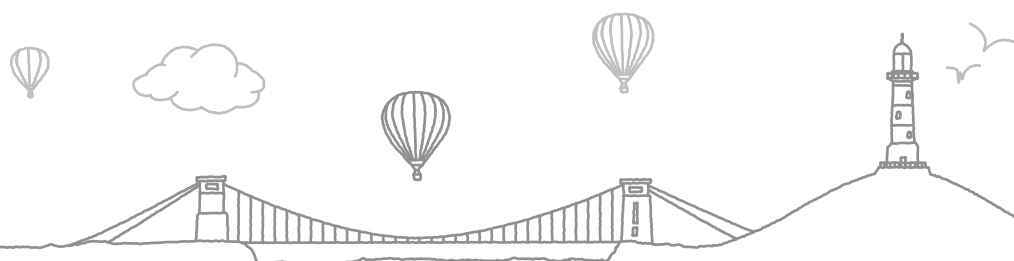
All excursions and trips depend on the age and interests of the student. Please note that your teacher will accompany you on two LOCAL afternoon or evening excursions per week (one-week courses) plus one day visit at the weekend (courses of two weeks +) so that you will also have free time to explore the region by yourself. Any entrance fees to museums and travel by public transport etc. for the student and teacher must be paid by the students (adults). On Young Learners courses, excursion fees for local excursions with your teacher are included in the fees.

### Insurance

We offer you FREE travel insurance with Studentguard+. Your insurance policy will be issued with your course booking documents. Cover commences as soon as you leave home on the first day and ends when you reach home on the last day of your trip.

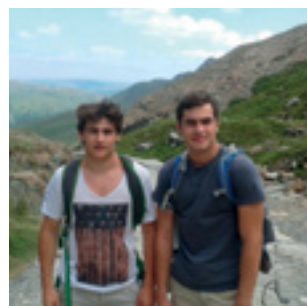
### The International Student Policy covers:

- personal injury and medical expenses
- personal money, passport and documents
- repatriation
- course fees
- cancellation or curtailment charges
- personal liability
- personal belongings
- travel delay, missed departure, delayed or lost personal belongings





## Excursions



The social programme is built around your needs and wishes so that, whatever your interests, you can fully enjoy your stay. You can choose from a wide range of local excursions and activities including sports (for example golf, tennis, swimming, walking), cultural activities such as museums and exhibitions; bowling, cinema, theatre, restaurants and local attractions depending on the location of the course.

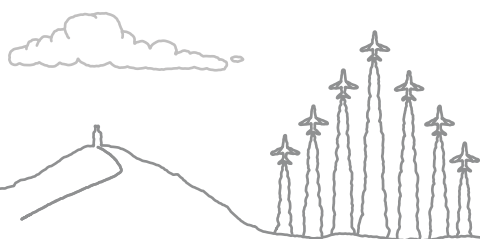
Our towns and cities have excellent shopping centres, tourist attractions and traditional pubs. Britain is famous for its many magnificent historic stately homes and gardens. During the summer there are many special events including music festivals and local carnivals.

Your excursions and trips will be planned at the start of the course with your teacher according to your individual interests. The teacher will accompany you on two half-day or evening local excursions per week (one-week courses) and one day trip at the weekend (courses of two weeks or longer). You can state on the booking form which activities you would prefer and we can then advise on cost and availability.

**Excursion Fees:** Adults should pay all entrance fees to museums and travel by public transport etc. including fees for your teacher. Young Learner courses are fully inclusive of all costs for local activities and excursions. If Young Learners on 1:1 courses wish to book excursions to large attractions e.g. theme parks, visits to London or extra lessons such as golf, tennis or horse-riding, then extra fees are payable in advance to cover the extra cost for teacher and student.



*“My trip was a perfect combination of learning the language and a cultural journey that allowed me to meet new places, new customs and new people.”*



## Travel



A local transfer from the nearest bus or train station to your teacher's home is FREE. If you are a fairly confident traveller, it is easy to get from the airport to the teacher's home town by bus ([www.nationalexpress.com](http://www.nationalexpress.com)) or by train ([www.nationalrail.co.uk](http://www.nationalrail.co.uk)).

**Airport Transfers:** If you require a personal airport transfer, we can arrange this with either your teacher or one of our highly trusted taxi drivers – the cost will be advised at the time of booking and is dependent upon the distance from the airport to the teacher's home.

Arrival at your teacher's home should be scheduled for Sunday afternoon/evening (3pm to 9pm) and departure on Saturday morning (9am to 12pm). Transfers can be arranged for flights arriving/departing during these times. Any flights outside these times will incur an additional charge or we may recommend a hotel stay prior to arriving at or departing from your teacher's home.

Please note that all Young Learners are required to book a transfer service with us.

“ Thank you for helping me  
to achieve my goal. ”





## A Wide Variety of Locations

You can choose to study with a teacher in many locations all over Britain, in the city, in the countryside or by the sea! Many of our teachers live in or near the cities of Bristol and Bath, but we also have teachers in other good locations all over the UK: Cornwall, Devon, Gloucestershire,

Oxfordshire, Hertfordshire, Kent, the Lake District (Cumbria), Leeds, London, Liverpool, Manchester, Southampton, the South Coast (Brighton, Hastings), Scotland, Wales, Northern Ireland and many more! Here are just some of our locations:

“Immerse yourself  
in English.”

*River Thames,  
London*



*The Royal Crescent, Bath*



*Snowdonia, Wales*



*Bournemouth*







*St Michael's Mount, Cornwall*







# General English

						AGE
15 - 30 hours per week	3 - 6 hours per day	1:1 2:1 mini-group	Start any Sunday	1 - 52 weeks	Elementary - Advanced level	18+



## Rapid progress in English

We specialise in providing individually designed, one-to-one intensive English language courses in your teacher's home. You will make rapid progress in English on a course because you are totally immersed in the English language and we offer you a course specially designed for all your individual needs.

The lessons consist of a range of all skills (reading, writing, listening, speaking, vocabulary, grammar and pronunciation) and culture.

## Programme of study


At the beginning of the course, the teacher will assess your level of English and requirements, and plan a programme of study. You will be assessed again at the end of the course to record progress. A full report of lesson content, achievement and recommendations for future study will be sent to you after the end of the course, as well as your certificate.



“I really enjoyed this trip because my family was very friendly and the little medieval town was beautiful.”



## Business and Professional English

						AGE
15 - 30 hours per week	3 - 6 hours per day	1:1 2:1 mini-group	Start any Sunday	1 - 52 weeks	Elementary - Advanced level	18+



“My teacher helped me with the specialised vocabulary I need for my work.”

### Professional English courses

The Course will help you with the English you need for business meetings, negotiations, making presentations and attending international conferences. Your professional English will improve and you will also practise the social English you need when meeting and entertaining your clients, looking after your overseas visitors and travelling on business.

### Skills and techniques

You will learn skills and techniques for telephoning, for writing reports, for business correspondence (letters and emails) and taking notes. We can help you with the specialist vocabulary you need for your work in a wide range of fields, e.g. engineering; information technology; medicine; law; finance, banking and accountancy; marketing and sales; human resources and many others.







“The one-to-one experience is the best way to improve your communication skills in a short time.”





## Crash Course

						AGE
20 hours	5 hours per day	1:1 2:1 mini-group	Start any day	4 days	Elementary - Advanced level	18+



### *An intensive English course in only four days*

This intensive 1:1 course is the same as a normal week's course, but in only four days. You can come any four days of the week including the weekend. The lessons will be on Business, Professional or General English. Conversational English will be practised in social situations with your teacher and family.

- 20 hours 1:1 tuition
- self-study time
- individual assessment
- certificate of attendance
- study bedroom in your teacher's home
- all meals
- course workbook
- many extra hours communication skills practice with your teacher and family
- progress report and recommendations for future study
- one accompanied excursion (excluding entrance fees to museums etc.)
- transfer from local train/bus station

	Morning	Afternoon	Evening
Day 1	Arrive at teacher's home; Lunch with teacher	4 hours 1:1 lessons	Dinner with teacher and family, conversation and private study
Day 2	4 hours 1:1 lessons; Lunch with teacher	Short excursion to local place of interest	2 hours 1:1 lessons; dinner with teacher and family, conversation and self-study preparation for the following day
Day 3	3 hours 1:1 lessons; Lunch with teacher	3 hours 1:1 lessons	Dinner with teacher and family, conversation and self-study preparation
Day 4	4 hours 1:1 lessons; Lunch with teacher	Departure	



## English for Exams

						AGE
15 - 30 hours per week	3 - 6 hours per day	1:1 2:1 mini-group	Start any Sunday	1 - 52 weeks	Elementary - Advanced level	18+



### Intensive preparation

You can study intensively with an experienced teacher to prepare for your English examination. All sections of the exam will be covered using up-to-date exam preparation materials. Your teacher will advise you on exam strategy and help you overcome your individual difficulties. There will be opportunities to do practice tests and timed exam practice. Your teacher will give an assessment of your predicted grade. You can study for:



*“This morning I received my IELTS result and I’m very happy with my score. My teacher was excellent and her help was fundamental. Thank you for your contribution to my success.”*

**English exams offered in your country** – for example, the Abitur (Germany) or Baccalauréat (France). In addition to grammar, reading, writing, listening and speaking skills, you can also study English literature. Please advise us in advance which novels you are studying.

**IELTS** – the preferred English language qualification for UK and Australian universities. We prepare you for all four modules – reading, writing, listening and speaking.

**TOEFL** – an English language qualification for universities in the USA and Canada.







**TOEIC** – The Test of English for International Communication is used by institutions, companies and government agencies worldwide to measure the English proficiency of non-native English speakers.

**Cambridge English Examinations** Preliminary (Preliminary English Test); First (First Certificate in English); Advanced (Certificate of Advanced English); and Proficiency (Certificate of Proficiency in English).





## Young Learners

						AGE
15 - 30 hours per week	3 - 6 hours per day	1:1 2:1 mini-group	Start any Sunday	1 - 52 weeks	Elementary - Advanced level	10 - 17



### *Young Learners 1:1 (ages 10-17)*

A Young Learners course is the ideal way for children and teenagers to spend a study holiday in the UK or as preparation for a longer stay in the UK at school or university. Students will be gently introduced to the English language and culture in a sympathetic environment and will have an individually designed programme of lessons and activities. Lessons can focus on the English needed at school, General English, Academic English or English for Exams. This course is fully inclusive of all costs for local excursions and activities, the only money needed is personal spending money.

### *We take care of your child*

You want the very best for your child and so do we. We understand your worries about sending your child to the UK, especially for the first time.

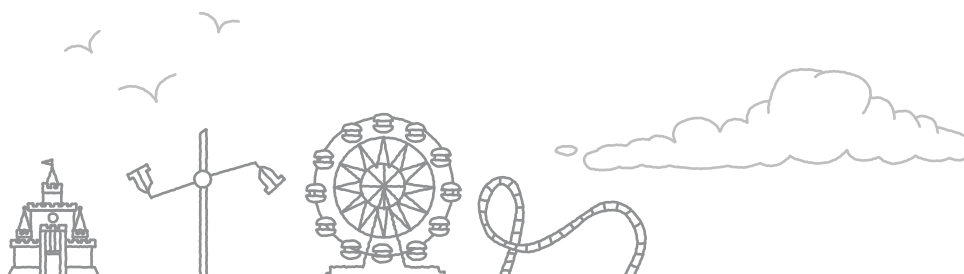
We are dedicated to ensuring that the children in our care make rapid progress in English and also enjoy an unforgettable experience in a safe, homely, fully supervised environment.

All our teachers are experienced, professional and qualified and have been thoroughly investigated by us.

### *Young Learners under 14*

In addition to English tuition and the usual excursion programme, Young Learners aged 10 to 13 have daily activities in the home such as baking, crafts or projects to ensure their time is fully supervised by the teacher.

These daily activities are included in the course fees for students aged 10 to 13 but may also be purchased as an additional package for students aged 14 to 17 on Young Learners 1:1 courses.



## Summer 2:1

						AGE
15 hours per week	3 hours per day	2:1	Start any Sunday	2 - 9 weeks	Elementary - Upper Intermediate	12 - 21



### *Summer 2:1 – two students with one teacher*

Come with your partner or be matched by us!

**For:** Young Learners (ages 12–17) and Young Adults (ages 18–21)

**English Level:** Elementary to Upper Intermediate

Choose a Summer 2:1 course and we can match you with a student of a different nationality or first language. Your language learning partner will be carefully selected to match your age, interests and level of English. This is an excellent opportunity to share your course and to make a new friend from another country. You can also choose to come with a friend or member of your family and study together.

- 15 hours 2:1 English tuition per week
- three excursions per week with your teacher
- afternoon activities with your partner
- all local excursions and activities included in the fees
- minimum stay two weeks

The matching service for Summer 2:1 courses is available from the last week in June until the end of August.

In the unusual situation that we don't find a suitable partner for you after you have booked your Summer 2:1 course, you will be upgraded to a 1:1 course for no extra fees.

Students on a Summer 2:1 course may share a bedroom with their partner.

Summer 2:1 courses are General English courses. If you have a specific individual requirement for your course e.g. exam preparation or advanced English, please book a 1:1 course.

*“My experience with was fantastic! My homestay was brilliant, my family was perfect! I got on very well with my teacher and partner and we still keep in touch.”*



## Academic English

						AGE
15 - 30 hours per week	3 - 6 hours per day	1:1 2:1 mini-group	Start any Sunday	1 - 52 weeks	Pre- Intermediate - Advanced	18+



### *Specially designed for your individual needs*

Living with your teacher is one of the best ways to learn English and prepare for study at school or university in the UK because we offer you a course specially designed to meet your individual needs. You will learn the spoken English needed to communicate with teachers and students. You will also learn about English culture and way of life so that you feel prepared to study in an English-speaking environment. We concentrate on the academic reading and writing skills needed for GCSE, A-Level or Degree courses.

“With my teacher’s help,  
I felt prepared to enter  
university in the UK.”









### *Learn how to structure and write essays*

You will improve your skills in writing summaries and reports and learn how to structure and write essays. We can help you with the specialised vocabulary and language you need for your subjects, for example science, maths and business studies. You can combine this course with English for Exams and prepare for tests such as IELTS or English exams offered in your country, including English literature.





## English for Teachers

						AGE
15 - 30 hours per week	3 - 6 hours per day	1:1 2:1 mini-group	Start any Sunday	1 - 52 weeks	Intermediate - Advanced level	18+



*“It is rare in life that you experience a language course where everything is perfect. My teacher was professional but also like a friend, caring and understanding. The house, my room, the food was great. The school material matched my needs exactly.”*


### *An advanced course*

This is an advanced course for teachers of English who need a refresher course to brush-up communication skills, vocabulary and use of English for the classroom. The course will be with an experienced English teacher who will use a wide range of authentic materials to extend your range of idioms, expressions and

language skills. You can fine-tune pronunciation and discuss topical issues with the teacher and family. The ‘English for Teachers’ course is extremely flexible and is tailored to meet individual requirements. You decide when you want to come, how long you would like to stay, and the number of hours of tuition per week – 15, 20, 25 or 30.



## English for Parent and Child

						AGE
15 - 30 hours per week	3 - 6 hours per day	2:1 1:1	Start any Sunday	1 - 52 weeks	Elementary - Advanced level	7+



### *Enjoy a study course together*

This is a General English course specially designed for a parent and child who want to enjoy a study holiday together. You can either study English separately (1:1 course) or together if you have the same level of English and learning objectives (2:1 course). We recommend 15 or 20 hours' tuition per week in total and these

may be shared lessons or divided between parent and child. The minimum age we can accept a child for tuition is seven. If your child is under seven then they may come as an accompanying child without tuition. In some locations we have two teachers available for 1:1 lessons for parent and child at the same time.

“It was great to be able to travel and study together with my daughter.”



## English Plus

						AGE
7+ blocks of 3 hours per week	1-2 blocks of 3 hours per day	1:1 2:1 mini-group	Start any Sunday	1 - 52 weeks	Beginner - Advanced level	18+



### *Enjoy a study holiday*

An English Plus course is specially designed for those who want to enjoy a study holiday. You can choose from a wide range of courses:

Guided Sightseeing; Walking – in the countryside, by the sea or in the mountains; art and design; cookery; flower arranging; gardening and visiting formal gardens; poetry and/or literature; English for tourism; explore London; creative writing; local history; cycling; art history; cake decoration and many more!

### *Mix and match*

**Course Structure:** on an English Plus course, you choose the number of English lessons and the number of activity lessons per week in blocks of three hours. You can mix and match the number of blocks and even combine courses, for example you can do English plus cooking for one week and an English plus sightseeing course the next week.

### *Created around you*

The minimum number of blocks on a one-week course is seven. If you have an interest or hobby not mentioned here, please ask us – our teachers have a wide range of interests and talents and we are happy to design an individual course for you!

Courses are 1:1 or 2:1 so you can come on your own or with a partner, friend or family member. Please note that course fees include your teacher's time and full board and accommodation in your teacher's home, but exclude all entrance fees and tickets to museums etc. for the student and teacher which must be paid by the student.

*“Everything I did from the adventurous hikes to conversations with the family will always be a wonderful memory.”*





## What's included

### *Course Fees Include:*


- individual tuition (number of hours as requested) designed to meet your needs
- individual assessment at the start of the course
- study bedroom in your teacher's home
- all study materials
- student handbook
- progress report and recommendations for future study
- certificate of attendance
- full board: breakfast, lunch and dinner with your teacher
- accompanied LOCAL excursions: two per week (one-week courses) and one per weekend (two weeks+), excluding entrance fees on adult courses
- transfer from the local train or bus station
- 24-hour support from Living Learning English staff
- comprehensive travel insurance

### *Course Fees Do Not Include:*

- travel to/from the UK
- airport transfers. An optional meet-and-greet service is available. Fees for airport transfers will be advised at the time of enquiry
- entrance fees to museums, exhibitions, cinema, theatre etc. for you and your teacher (except Young Learners courses, where fees for local excursions are included)
- any examination and administration fees for external exams

## Booking





*“Undoubtedly for me,  
this is the best way to improve  
your English.”*



Find us on Facebook  
EGA International



Follow us on Twitter  
@EGA\_Internation

[www.ega-international.com](http://www.ega-international.com)



*“I learned more in  
two weeks with my teacher  
at home than in six  
weeks at a school.”*

**EGA International**  
LEARN • SPEAK • TRAVEL

[www.ega-international.com](http://www.ega-international.com)

TOTAL IMMERSION IN THE ENGLISH LANGUAGE

College House, College Square, Killarney, Ireland



T: +353 087 267 9237



E: [info@ega-international.com](mailto:info@ega-international.com)

